

ARV-2-K

KINETIC AIR RELEASE VALVE DN50



The ARV-2-K is a kinetic air release valve. Its function is to allow air to be expelled from the pipeline during filling, and air to be admitted into the pipeline during emptying.

ADVANTAGES

- ▷ Designed to efficiently extract air trapped in medium sized pipes, large filters, tanks and other places where the absence of air is required for correct functioning.
- ▷ Due to its design, the valve is totally sealed even at very low pressure.
- ▷ Due to its exclusive internal design, the float is not affected by the air stream. Only water will shut the valve.
- ▷ Its outlet features a threaded elbow to provide a wider range of connection possibilities, as it is easily detachable, offering a vertical outlet.
- ▷ The valve is UV stable.

OPERATIONS

Vents air from the pipes as they fill. When the water reaches the valve, the float rises, closing the discharge hole.

It prevents the pipeline collapsing by allowing air to be drawn in through the valve.

TECHNICAL DATA

Pressure Classes	PN16	
Maximum working Pressure	16 Bar (225 PSI)	
Temperature Range	0°C to 80°C	
Connection	50mm Male BSP	50mm Male NPT
Volume of Air Extracted	At least 365.3m ³ /h at 5 PSI	
Inlet Size	50mm	
Outlet Size	32mm	
Weight	0.7kg	
Height	272mm	
Width	100mm	



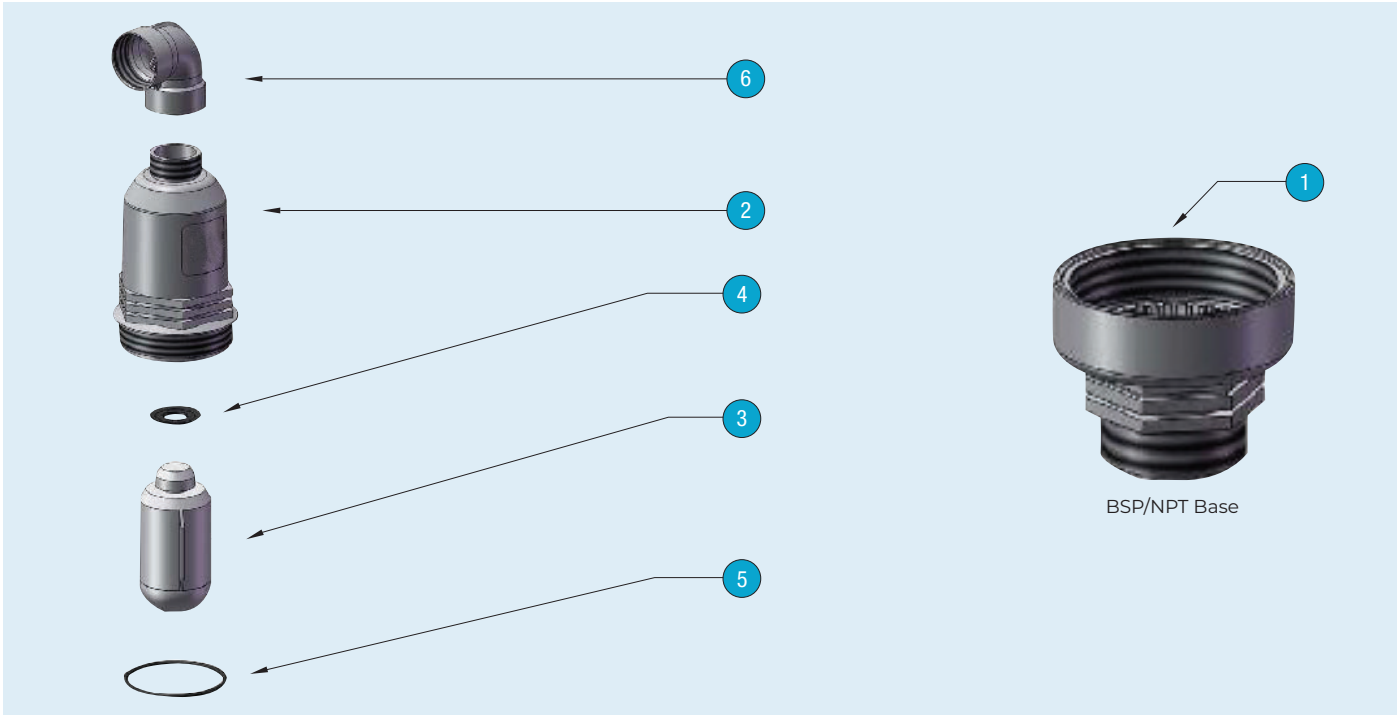
ARV-2-K

KINETIC AIR RELEASE VALVE

MATERIAL SPECIFICATIONS & PARTS LIST

NO.	DESCRIPTION	MATERIAL
1	Base	Fibreglass-Reinforced Polyamide
2	Body	Fibreglass-Reinforced Polyamide
3	Float	Polypropylene
4 *	Seal	EPDM
5 *	O Ring	NBR
6	90° Elbow	Fibreglass-Reinforced Polyamide

* Spare Parts

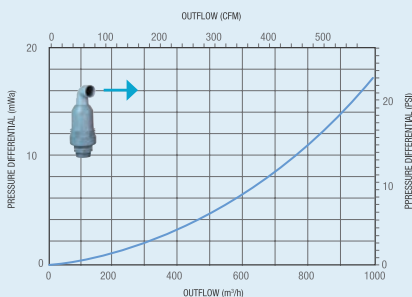


INSTALLATION

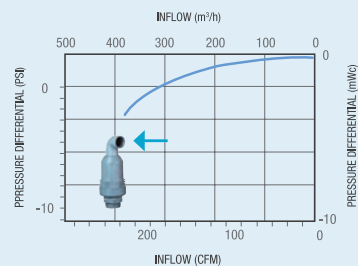
- ▷ For correct operation, the valve should always be in a vertical position.
- ▷ It is recommended to install a manual ball valve under the ARV, in order to make maintenance and repair operations easier without shutting the whole system.
- ▷ For correct operation, valves must undergo regular routine checks. The check should include the cleaning of the internal components and inspection of the seal conditions.

AIR INFLOW & OUTFLOW

Air OUTFLOW Main Seal



Air INFLOW Main Seal



54 Enterprise Drive, Bundoora, VIC, 3083
 p. 1300 789 256 | e. sales@avfi.com.au
 avfi.com.au

Designs, material and specifications shown are subject to change without notice due to our continuing program of product development.

All content is protected by Copyright and is owned and/or licensed by AVFI Pty Ltd. Copyright © AVFI Pty Ltd

