

ARV-034-A

AUTOMATIC AIR RELEASE VALVE DN25 WITH DN20 BASE



The ARV-034-A is a automatic air release valve. Its function is to allow air to be expelled from the pipeline during filling, and air to be admitted into the pipeline during emptying.

ADVANTAGES

- ▷ Designed to efficiently extract air trapped in pipes, filters, tanks and other equipment which must work without the presence of air.
- ▷ The valve has one seal, which expels both kinetic and residual air automatically, and this function is not affected by water pressure.
- ▷ Continuous and automatic operation.
- ▷ Efficient in design; with minimal parts for ease of maintenance.
- ▷ Its exclusive Y-shaped discharge outlet design allows a much greater air flow than other valves of this type, in both the discharge and the intake phases.
- ▷ The valve seals at very low pressures.
- ▷ The valve is UV stable.

OPERATIONS

- ▷ When the pipeline is being filled, trapped air is released through the large orifice of the kinetic valve.
- ▷ During emptying of the pipeline, the valve allows air to enter the pipeline through the large orifice.
- ▷ During normal operation the large orifice remains closed while the small orifice allows small amounts of trapped air to be released through the valve.
- ▷ The valve mechanism is designed to absorb small changes in pressure, which prevents the small orifice from continually opening. This maintains a constant air gap between the sealing mechanism and the medium.

TECHNICAL DATA

Pressure Classes	PN16	
Maximum working Pressure	16 Bar (232 PSI)	
Temperature Range	0°C to 80°C	
Connection	20mm Male BSP	20mm Male NPT
Volume of Air Extracted	35m ³ /h at 1 bar	
Inlet Size	20mm	
Outlet Size	6mm	
Weight	0.3kg	
Height	133mm	
Width	80mm	



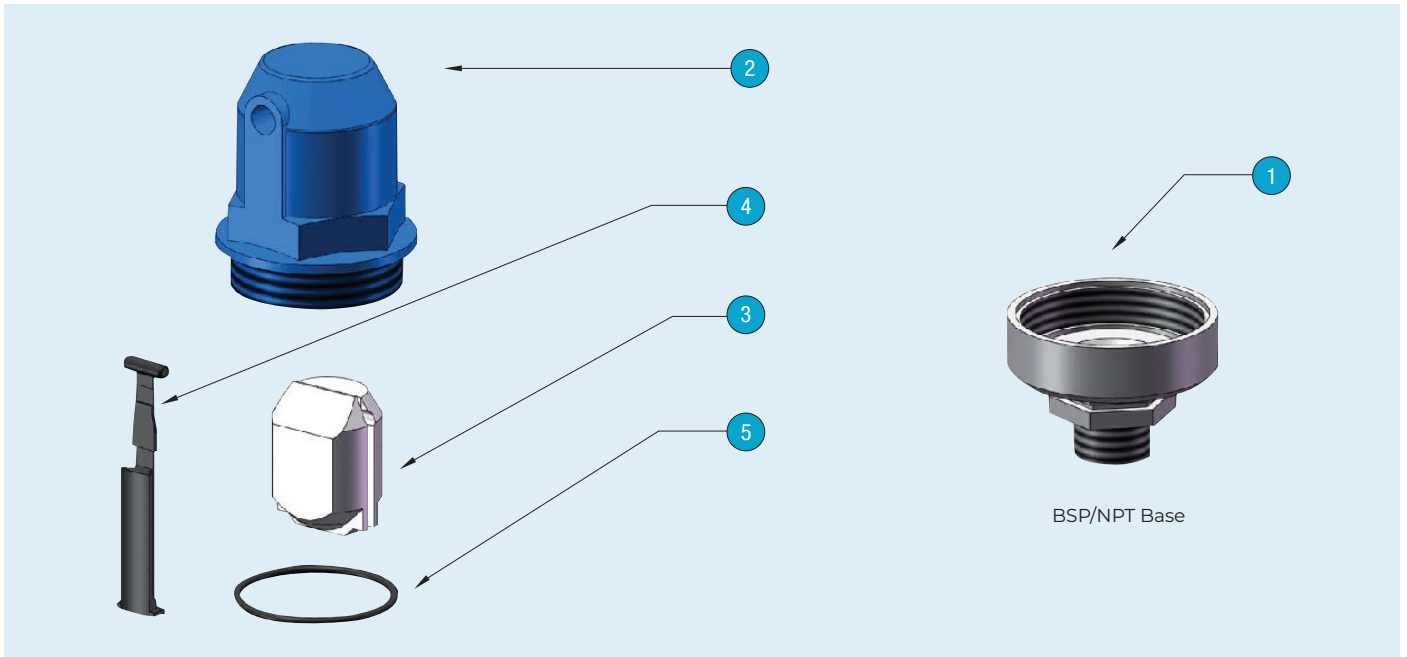
ARV-034-A

AUTOMATIC AIR RELEASE VALVE

MATERIAL SPECIFICATIONS & PARTS LIST

NO.	DESCRIPTION	MATERIAL
1	Base	Fibreglass-Reinforced Polyamide
2	Body	Fibreglass-Reinforced Polyamide
3	Float	Polypropylene
4 *	Seal	EPDM
5 *	O Ring	NBR

* Spare Parts

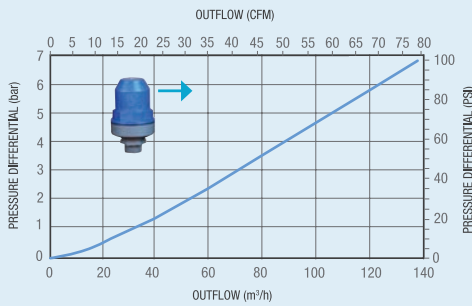


INSTALLATION

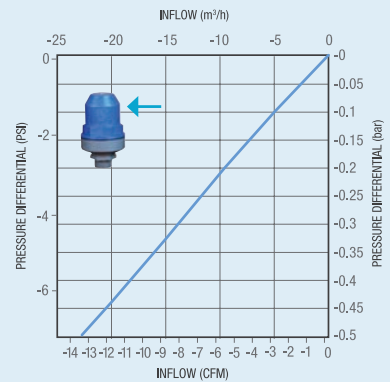
- ▷ For correct operation, the valve should always be in a vertical position.
- ▷ It is recommended to install a manual ball valve under the ARV, in order to make maintenance and repair operations easier without shutting the whole system.
- ▷ For correct operation, valves must undergo regular routine checks. The check should include the cleaning of the internal components and inspection of the seal conditions.

AIR INFLOW & OUTFLOW

Air OUTFLOW Main Seal



Air INFLOW Main Seal



54 Enterprise Drive, Bundoora, VIC, 3083
 p. 1300 789 256 | e. sales@avfi.com.au
 avfi.com.au

Designs, material and specifications shown are subject to change without notice due to our continuing program of product development.

All content is protected by Copyright and is owned and/or licensed by AVFI Pty Ltd. Copyright © AVFI Pty Ltd

